

YG-DCO-015

Yorkshire Green Energy Enablement (GREEN) Project

Volume 2

Document 2.8.1 Statutory or Non-Statutory Sites or Features
of Nature Conservation Plan Section A

Final Issue A

November 2022

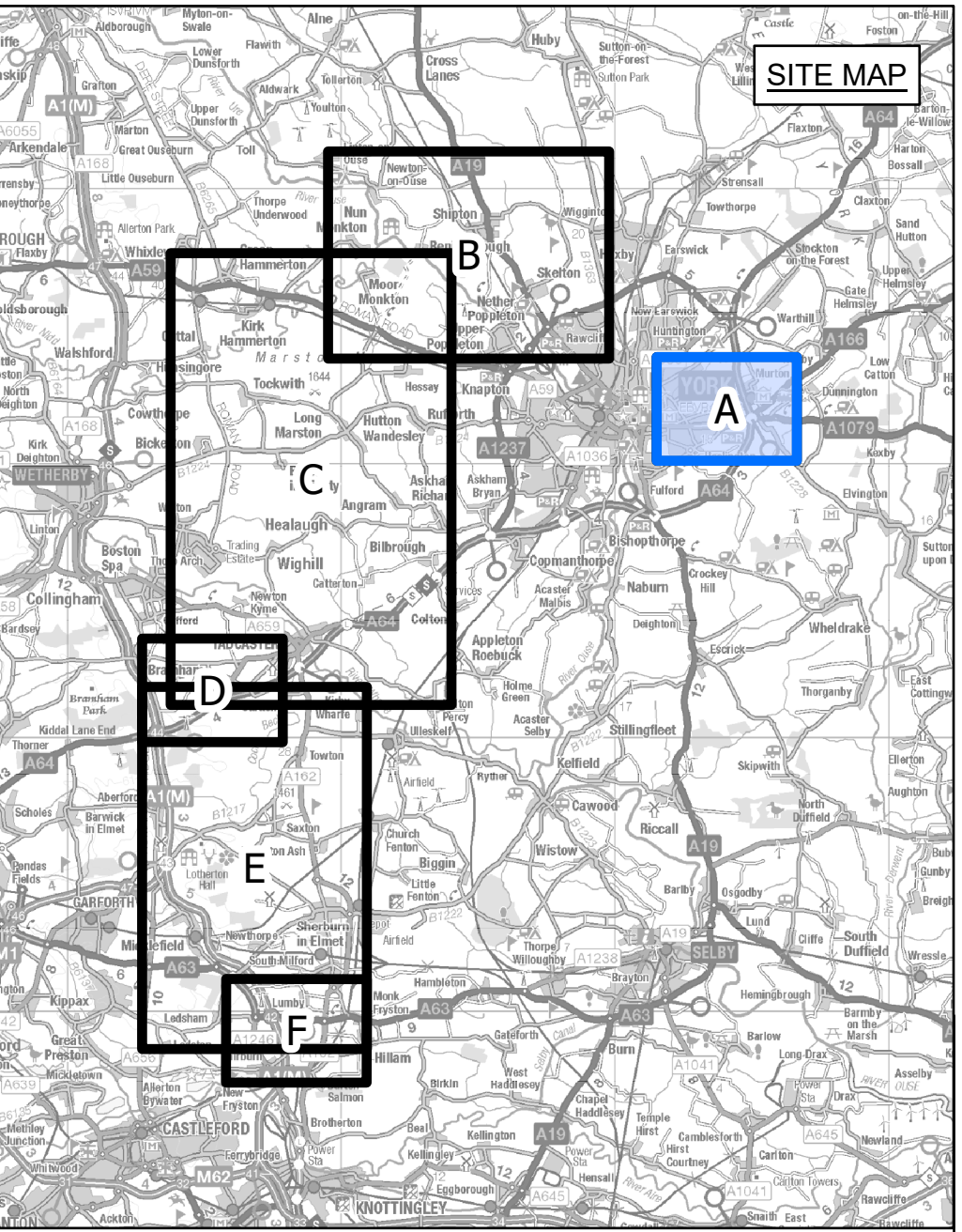
Planning Inspectorate Reference: EN020024

Infrastructure Planning (Applications: Prescribed Forms and
Procedure) Regulations 2009 Regulation 5(2)(l)(i)

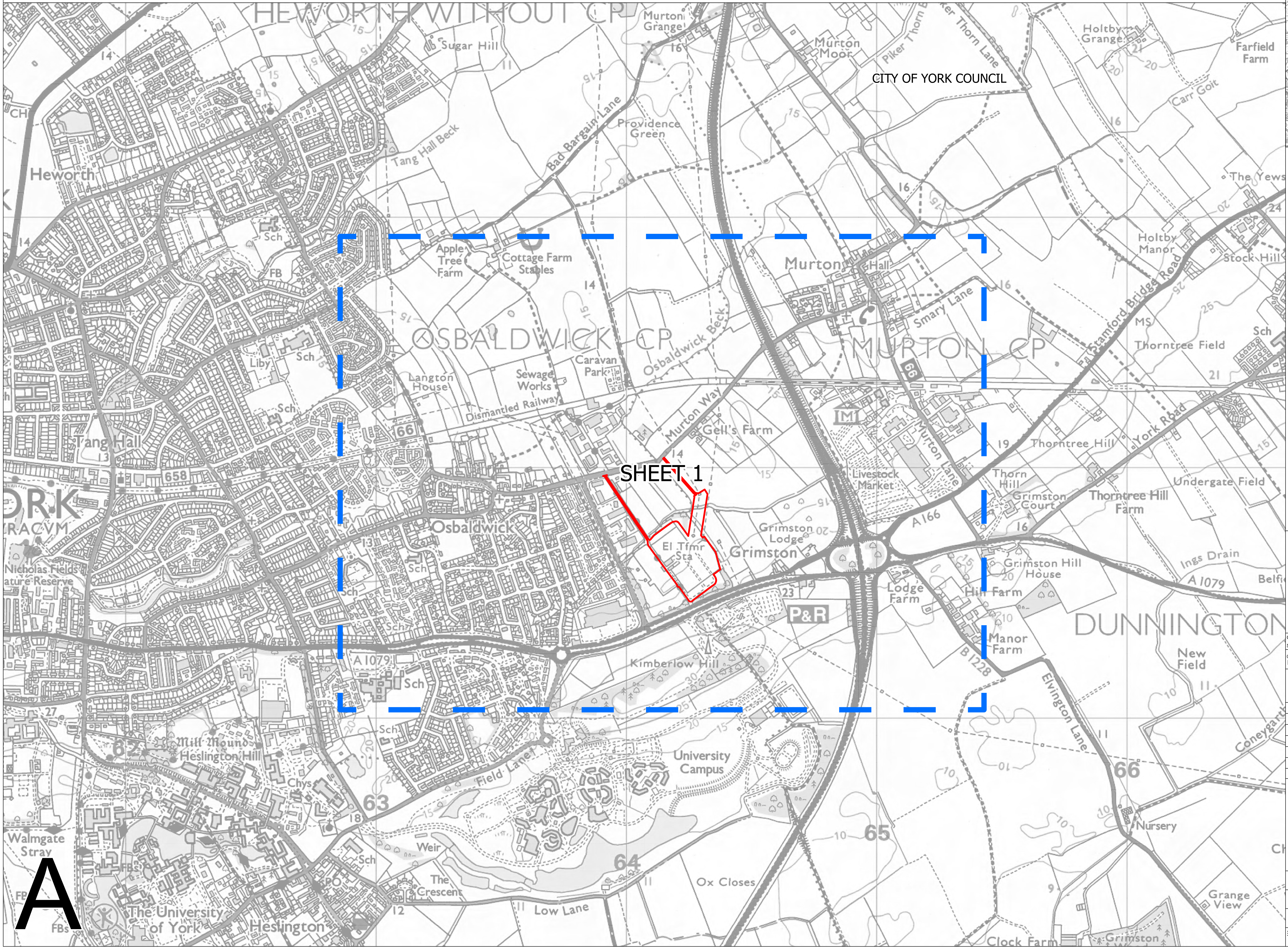
nationalgrid



NATIONAL GRID (YORKSHIRE GREEN ENERGY ENABLEMENT PROJECT) ORDER
 STATUTORY OR NON-STATUTORY SITES OR FEATURES OF NATURE CONSERVATION KEY PLAN
 REGULATION 5(2)(1)(i)
 SECTION A, SHEET 1 OF 1



LEGEND
 ORDER LIMITS
 SHEET INDEX



Notes
 This drawing is scaled at paper size A0, therefore any prints taken at smaller sizes will affect accuracy of the measurement units and should not be scaled against.
 For additional detail on the plan suites, please refer to Document 2.3 Plan Guidance Document, located in Volume 2 of the DCO Application.
 The local authorities' boundaries and titles are correct at the time of submission. North Yorkshire County Council and its 7 districts are expected to form a new single council (North Yorkshire Council) on 1 April 2023.

Coordinate System: British National Grid
 Sheet X Centroid Coordinate: 451973 Sheet Y Centroid Coordinate: 464161

BACKGROUND MAPPING INFORMATION HAS BEEN REPRODUCED FROM THE ORDNANCE SURVEY BY PERMISSION OF ORDNANCE SURVEY OF THE CONTROLLER OF HER MAJESTY'S STATIONERY OFFICE. CROWN COPYRIGHT ORDNANCE SURVEY ©. BLUESKY INTERNATIONAL LTD © NATIONAL GRID ELECTRICITY - 100024241.

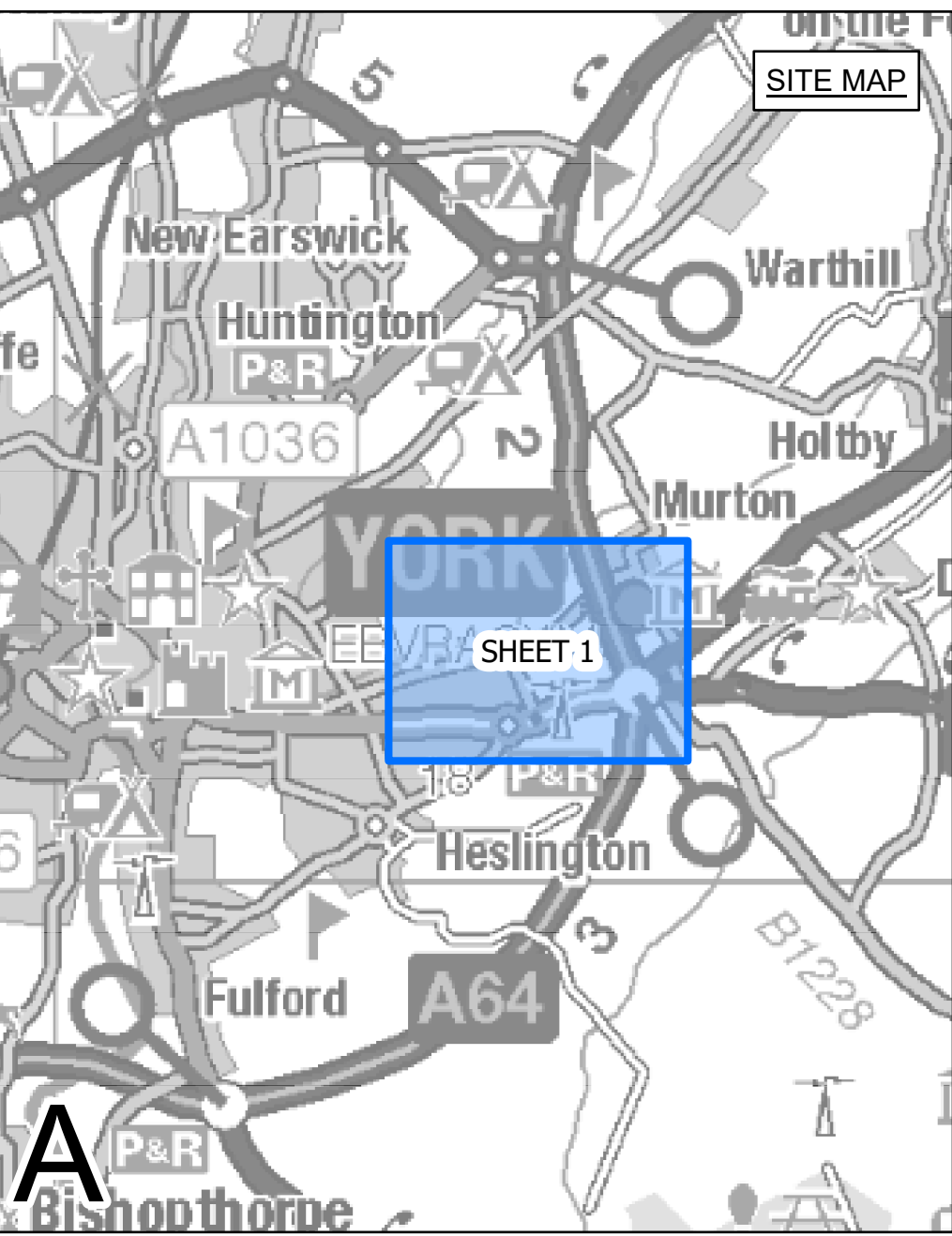
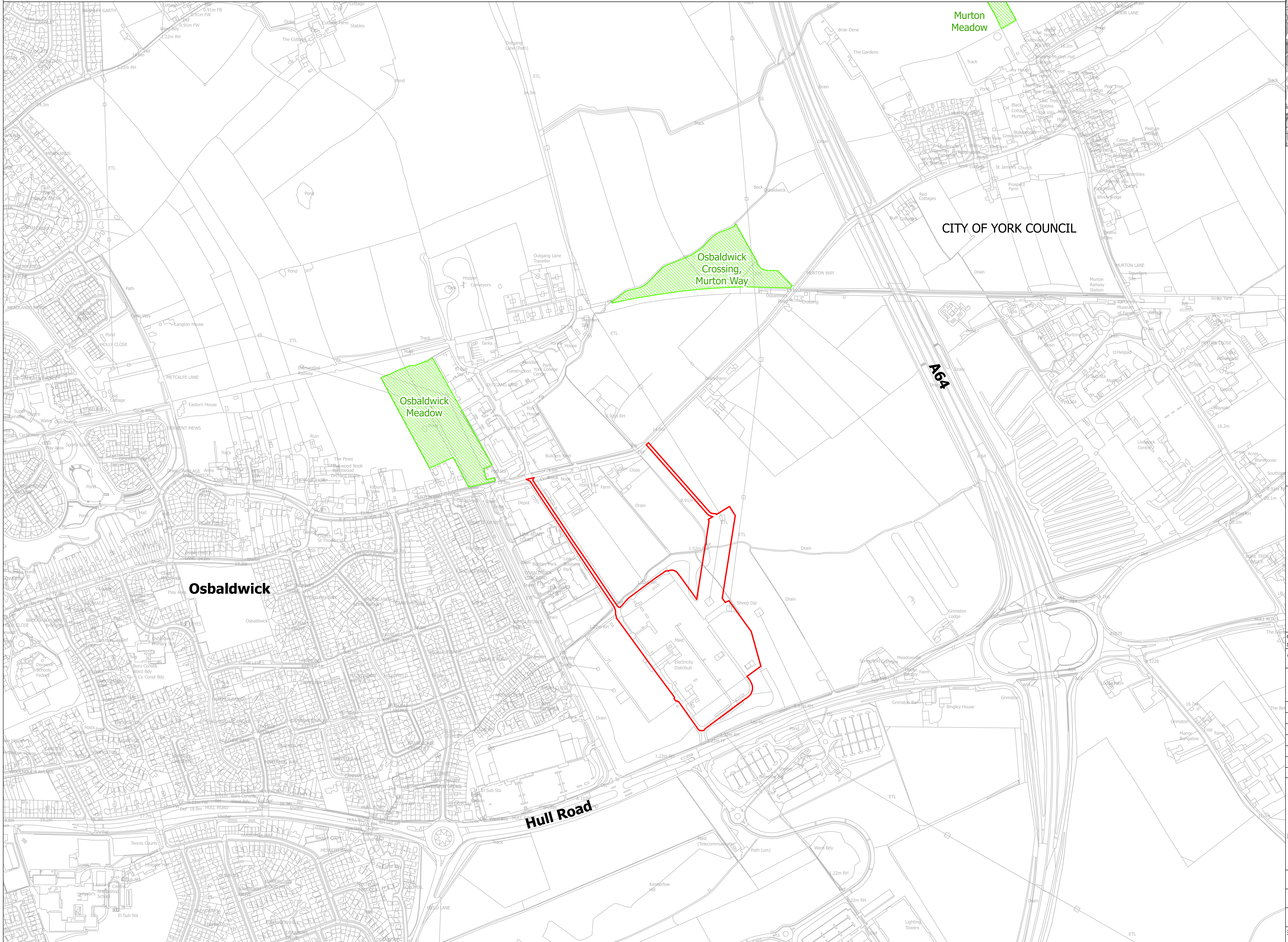
Issue	Date	Remarks	Drawn	Checked	Approved
A	01/11/2022	FOR DCO SUBMISSION	MTH	SF	EMD

Title
 NATIONAL GRID (YORKSHIRE GREEN ENERGY ENABLEMENT PROJECT) ORDER STATUTORY OR NON-STATUTORY SITES OR FEATURES OF NATURE CONSERVATION KEY PLAN REGULATION 5(2)(1)(i) SECTION A, SHEET 1 OF 1

Application Number		EN020024		
National Grid Drawing Reference		DCO_A/NR/KP/01		
Scale	Sheet Size	Sheet	Issue	
1:5,000	A0	SHEET 1 OF 1	A	



NATIONAL GRID (YORKSHIRE GREEN ENERGY ENABLEMENT PROJECT) ORDER
 STATUTORY OR NON-STATUTORY SITES OR FEATURES OF NATURE CONSERVATION PLAN
 REGULATION 5(2)(1)(i)
 SECTION A, SHEET 1 OF 1



LEGEND
 ORDER LIMITS
 CANDIDATE SITE OF INTEREST FOR NATURE CONSERVATION (SINC)

Notes
 This drawing is scaled at paper size A0, therefore any prints taken at smaller sizes will affect accuracy of the measurement units and should not be scaled against.
 For additional detail on the plan suites, please refer to Document 2.3 Plan Guidance Document, located in Volume 2 of the DCO Application.
 The local authorities' boundaries and titles are correct at the time of submission. North Yorkshire County Council and its 7 districts are expected to form a new single council (North Yorkshire Council) on 1 April 2023.
 The statutory site boundary information was obtained from the Multi-Agency Geographic Information for the Countryside (MAGIC) website. Non-statutory site data has been supplied by West Yorkshire Ecology Services and North and East Yorkshire Ecological Data Centre.
 There are no sites of geological importance within the Order Limits on this plan.

Coordinate System: British National Grid
 Sheet X Centroid Coordinate: 451979 Sheet Y Centroid Coordinate: 464143
 0 100 200 300 Meters
 BACKGROUND MAPPING INFORMATION HAS BEEN REPRODUCED FROM THE ORDNANCE SURVEY BY PERMISSION OF ORDNANCE SURVEY OF THE CONTROLLER OF HER MAJESTY'S STATIONERY OFFICE. CROWN COPYRIGHT ORDNANCE SURVEY © BLUESKY INTERNATIONAL LTD © NATIONAL GRID ELECTRICITY - 100024241.

Issue	Date	Remarks	Drawn	Checked	Approved
A	01/11/2022	FOR DCO SUBMISSION	MTH	SF	EMD

Title
 NATIONAL GRID
 (YORKSHIRE GREEN ENERGY
 ENABLEMENT PROJECT) ORDER
 STATUTORY OR NON-STATUTORY SITES OR
 FEATURES OF NATURE CONSERVATION PLAN
 REGULATION 5(2)(1)(i)
 SECTION A, SHEET 1 OF 1

nationalgrid			
Application Number	EN020024		
National Grid Drawing Reference			
DCO_A/NR/PS/01			
Scale	Sheet Size	Sheet	Issue
1:2,500	A0	SHEET 1 OF 1	A